

Add an entry to the Glass Gallery

If you only have a few photos to share (or even just one), add them to the Glass Gallery.

Click Create content

then Click Glass Gallery

The screenshot shows the website for The Glass Association. The navigation bar at the top includes links for About Us, Glass Images, GA News, Publications, Upcoming Events, Using the web site, and Links. The main content area is titled 'Create content' and lists several options: Blog entry, Book page, Event, Forum topic, Gallery, Glass Gallery, Image1, Image3, Page, and Recent posts. The 'Glass Gallery' option is highlighted, and a description below it reads: 'Add images of your glass to be displayed in the Glass Gallery.' To the left of the main content area is a sidebar with a search box and a list of navigation options, including 'Create content' which is expanded to show the 'Glass Gallery' option. To the right of the main content area is a section for 'Upcoming Events' with a list of events and a 'Calendar' section showing the month of February.

Home > Create content

The Glass Association

About Us Glass Images GA News Publications Upcoming Events Using the web site Links

Search this site: Search

ju113

- Blogs
- Contact
- Forums
- My account
- My bookmarks
- Polls
- Search
- Create content
 - Blog entry
 - Book page
 - Event
 - Forum topic
 - Gallery
 - Glass Gallery
 - Image1
 - Image3
 - Page
 - Poll
 - Story
- Recent posts
- Feed aggregator
- Administer
- Log out

Who's online
There are currently 1 user and 0 guests online.
Online users

- ju113

Recent blog posts

- Victorian Spider's Web Vases
- Blue Plaques for Glassmakers!
- Applied to all makers of glass
- Help for Ugly Sisters
- Fairy Godmothers, read this FIRST!
- More Frogs from the Webb Archive!
- Roller-skating frogs!! - Yes, really...
- Eric Knowles at the BGF launch
- BBC TV feature on The British Glass Foundation

Create Glass Gallery

Title: *

Brostre Copenhagen Jack in the Pulpit Hyacinth Vases

Tags:

Brostre, vase, hyacinth vase, Jack in the pulpit

enter a comma separated list of keywords

Menu settings

Show summary in full view

Body:

The ID for excluding or including this element is `glass-gallery@node/add/glass-gallery.edit-body`.

Input format

Book outline

Revision information

Comment settings

File attachments

URL path settings

gallery_image: *

Maximum file size: 20 MB
Allowed extensions: png gif jpg jpeg

upload a single image

Authoring information

Publishing options

Upcoming Events

- Cambridge Glass Fair
27 February, 2011 - 10:30 - 16:00
Chilford Hall Vineyard
- Loch, Heather & Peat
12 March, 2011 (All day)
Kingswinford Methodist Church & Broadfield House Glass Museum
- Mediaeval Stained Glass & Paperweights
9 April, 2011 (All day)
Worsley
- GA Trip to Veste Coburg and Bavaria
19 May, 2011 - 06:30 - 23 May, 2011 - 06:30
Germany
- Scandinavian Glass Day
10 September, 2011 - 11:00 - 16:00
Rye Sussex

Calendar

« February »

S	M	T	W	T	F	S
		1	2	3	4	5
6	7	8	9	10	11	12
13	14	15	16	17	18	19
20	21	22	23	24	25	26
27	28					

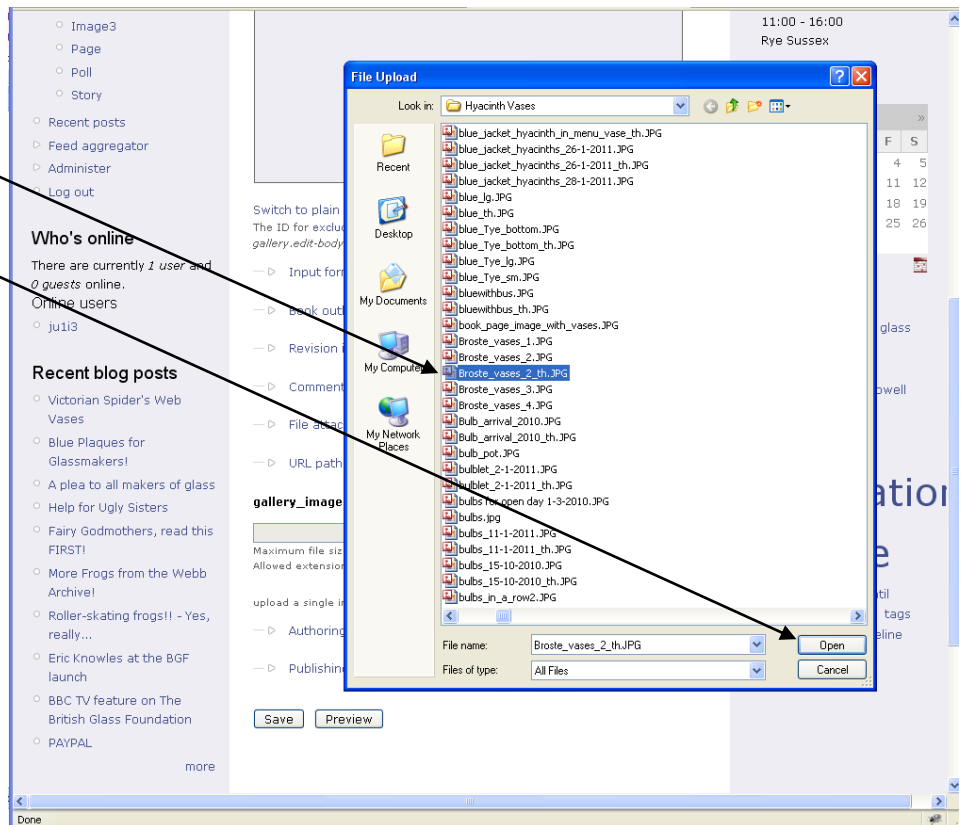
Tags

Powell Glass Fair
Cambridge tags studio glass uranium
kick-up Glass Association Webb
black glass
keywords vaseline
antique glass
vase truffle
pontil Tynesfield Victorian British truffle bottle

Add a title and tags about the glass image that you are adding.

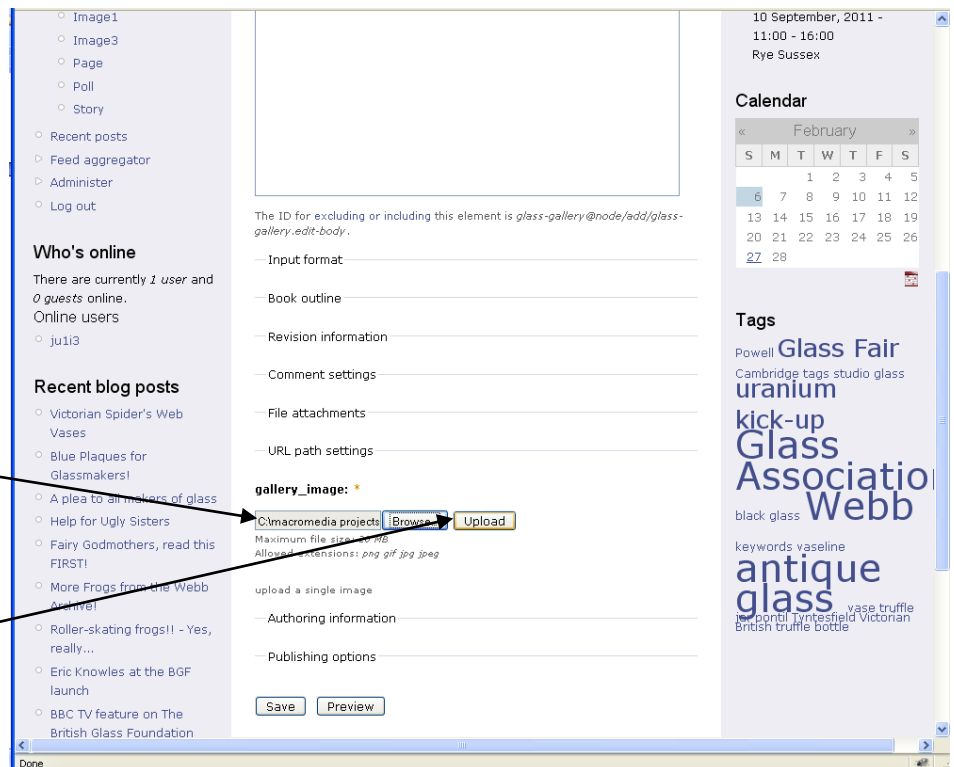
Click Browse to choose the image from your computer.

Navigate to the image on your computer, select it and click Open



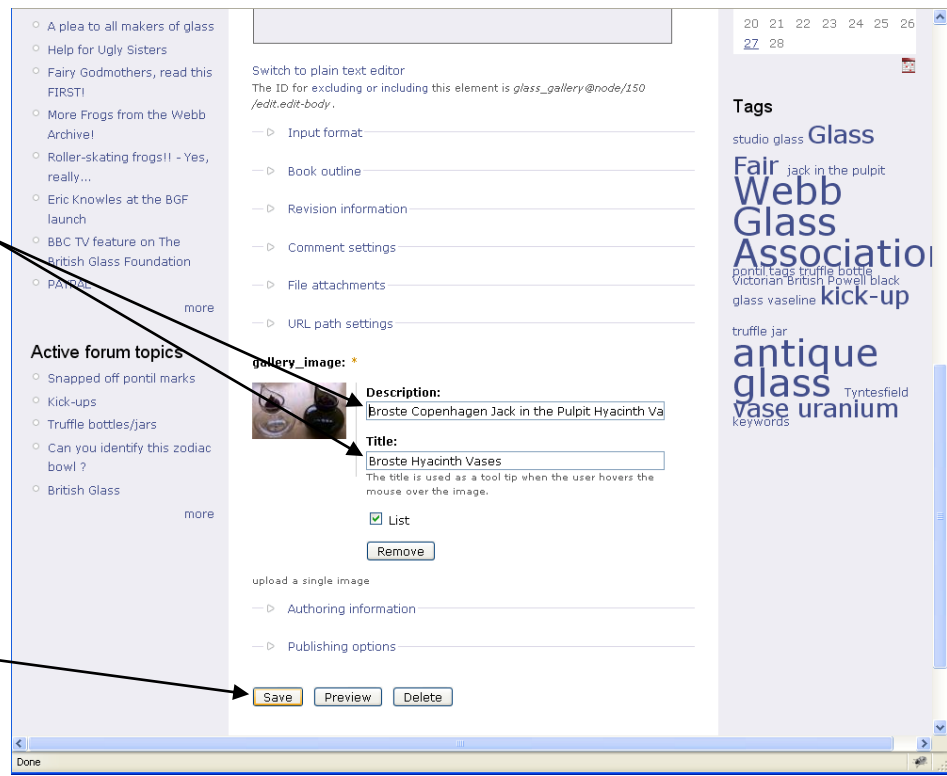
The file name will appear in the box

click Upload

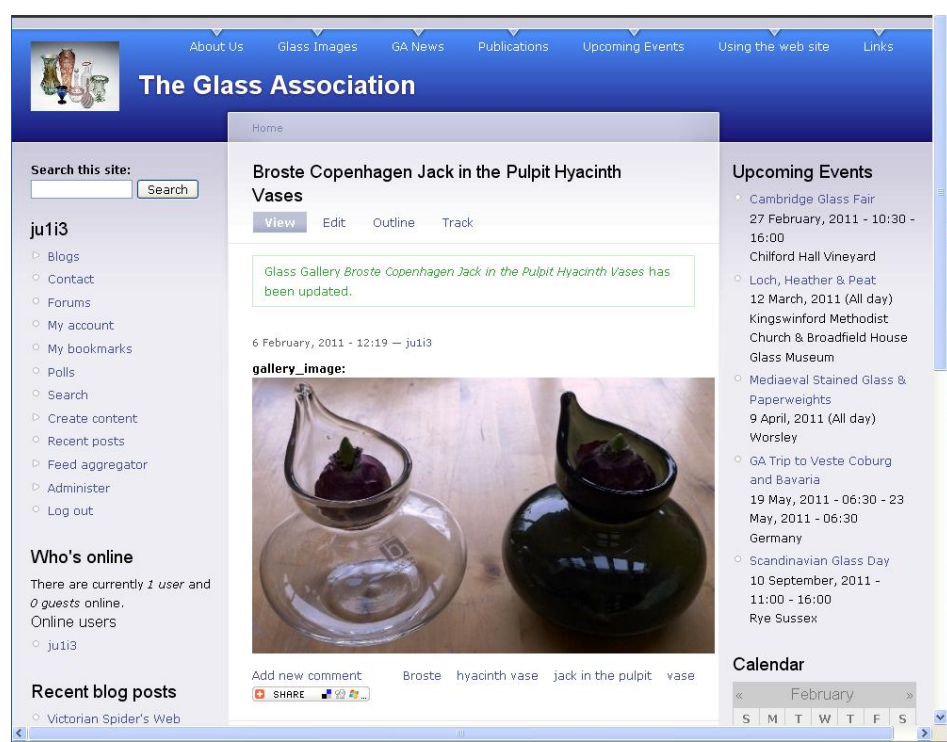


The file is uploaded and a small preview is shown. Enter a description and title

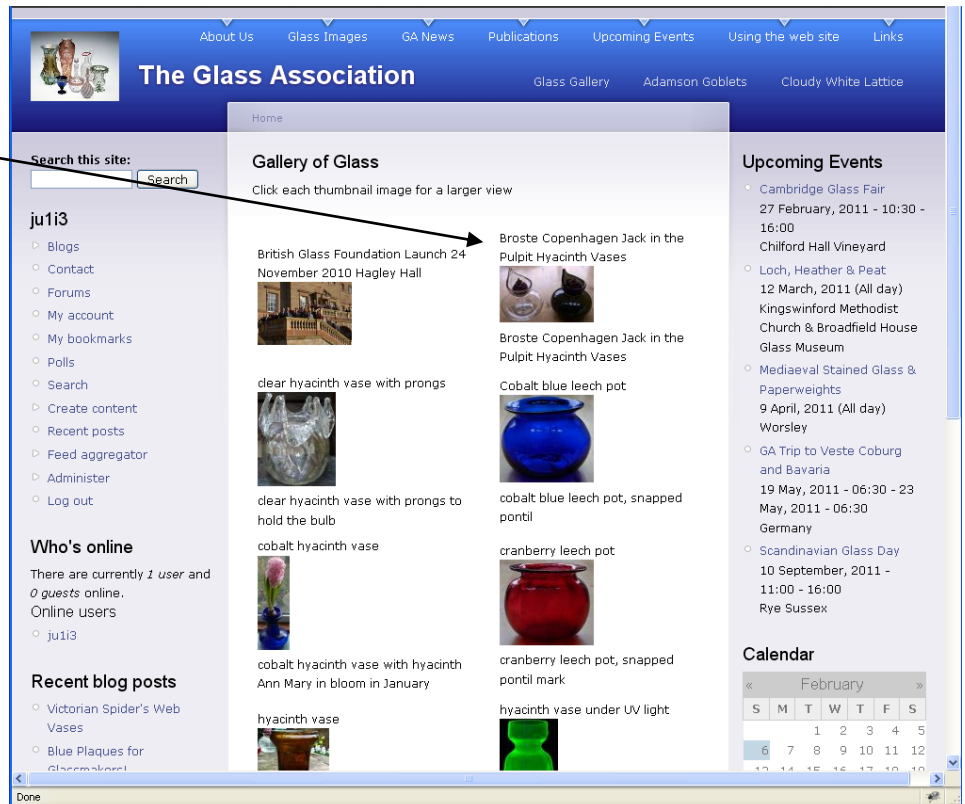
and click Save.



A confirmation message is shown that the image has been uploaded and the image displayed.



Selecting the Glass Gallery, small thumbnail images of all the Gallery entries are shown, including the one just added.



Clicking on a thumbnail causes the image to pop-up large/full size in a Lightbox. This image wasn't that large so the full size is shown on the first click. If you upload a very large image, the lightbox shows a large image which is then clickable to the full size very large image.

