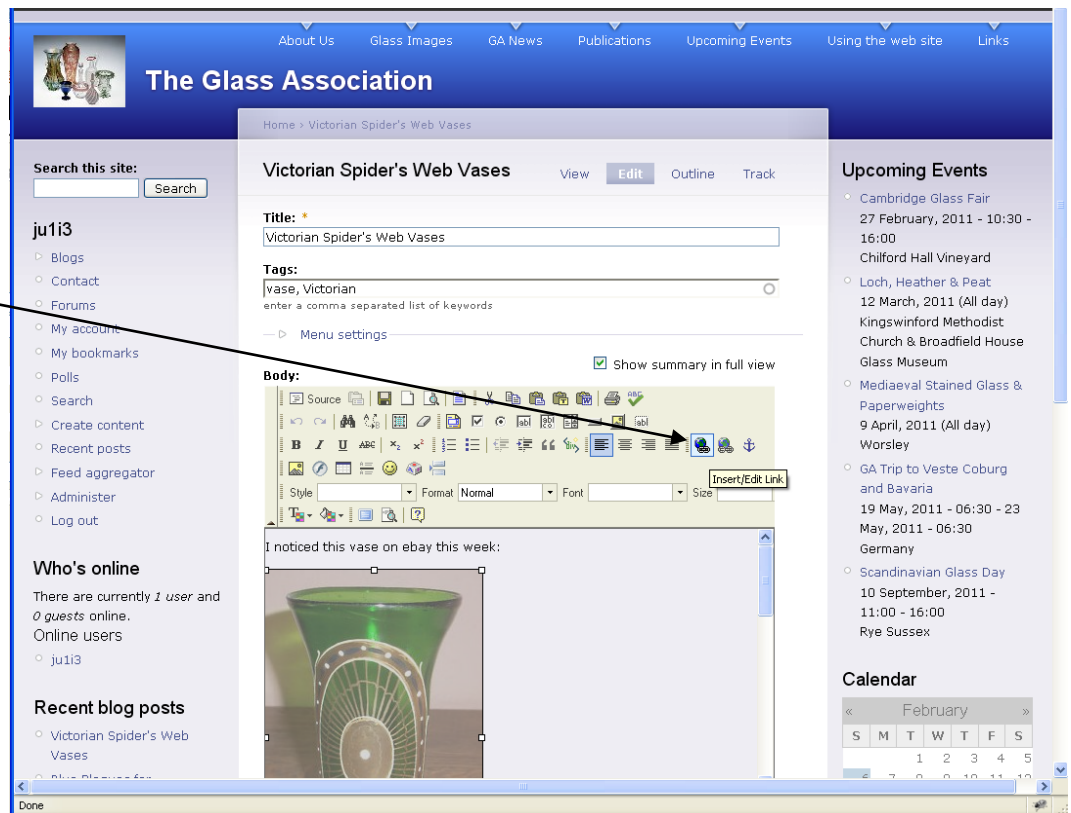


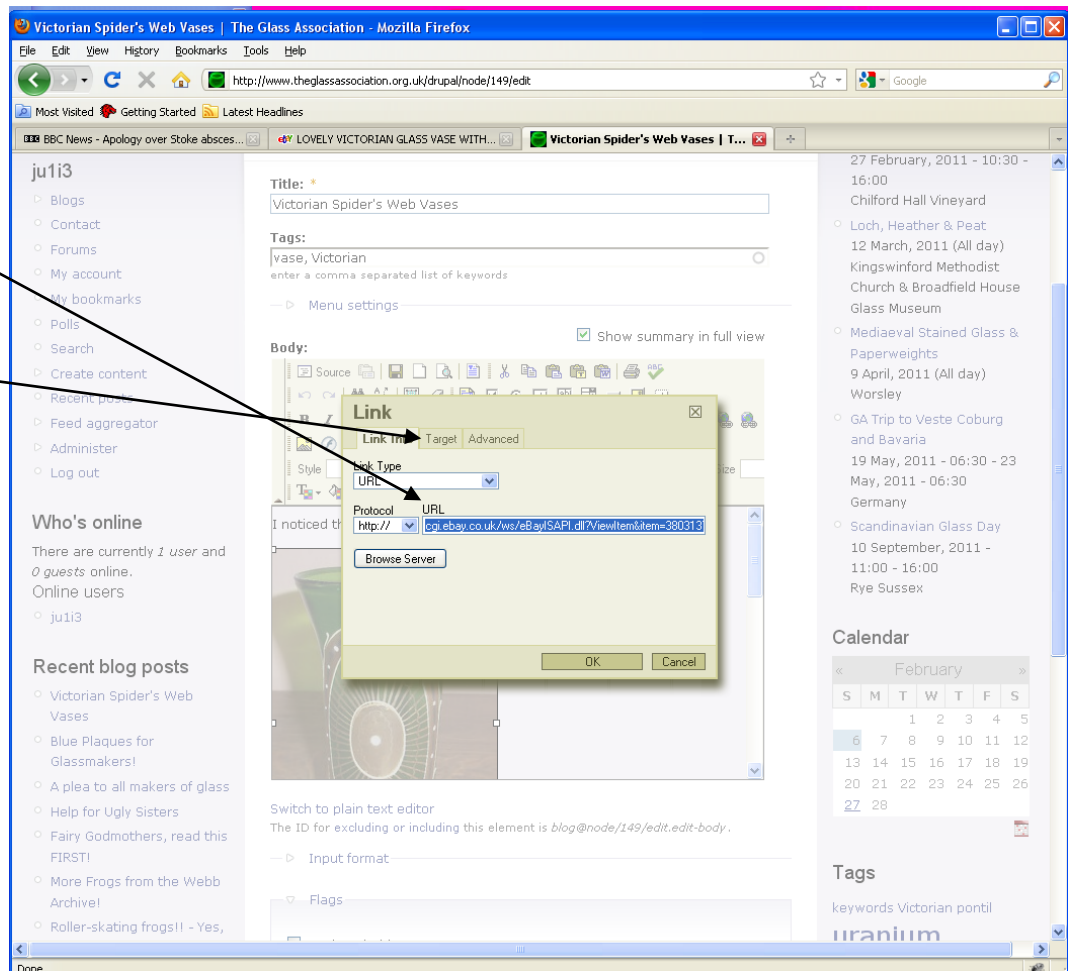
Adding Links to Text and Images

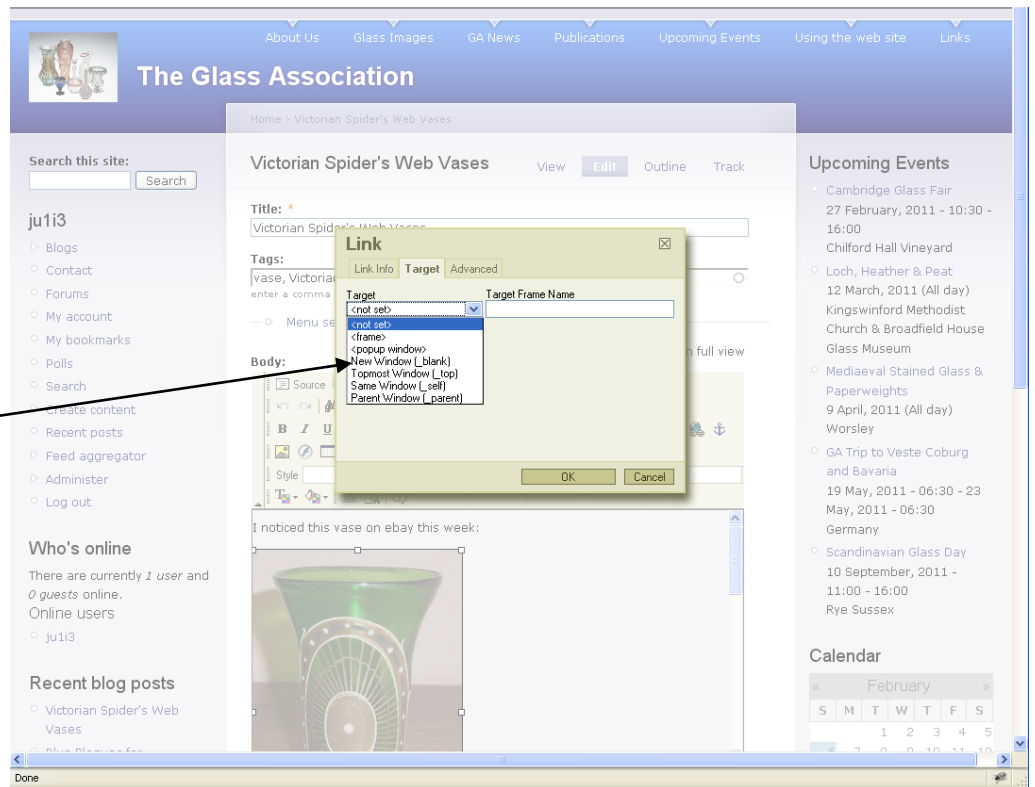
When you add a link to text or images you want a new window to be opened for the link, otherwise the viewer is taken away from The Glass Association site.

Select the image or text that you want to add a link to and click Insert/Edit Link

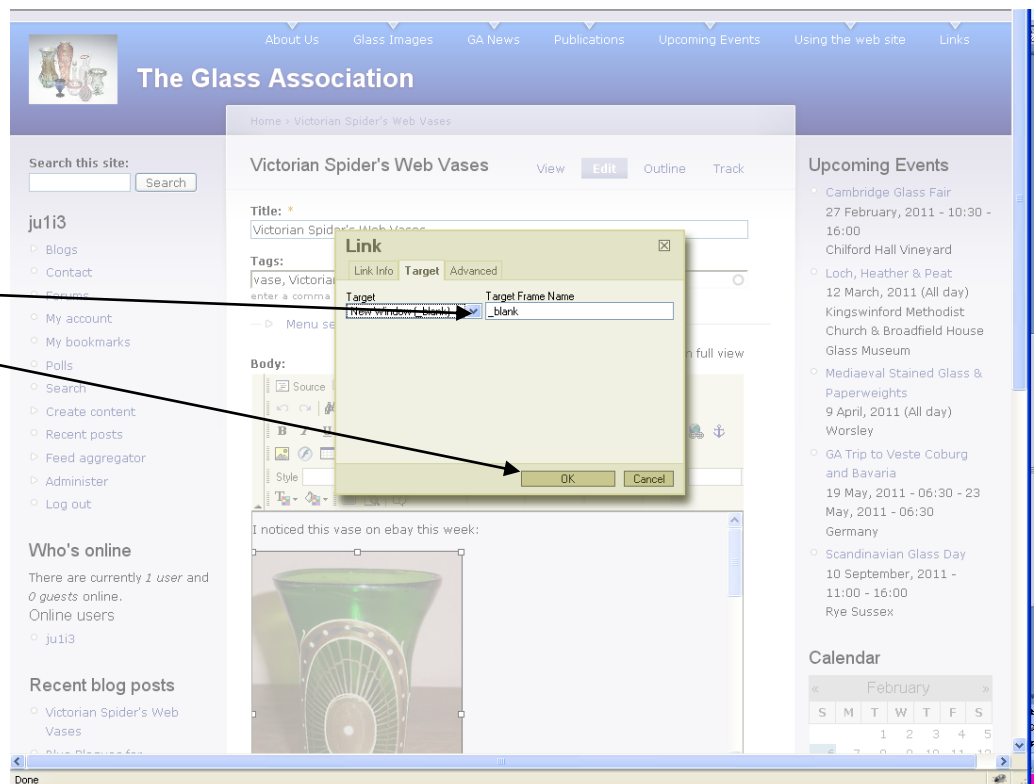


A dialogue box will pop-up, put the URL where you want the link to go to and then click on the Target tab.





Under Target you will have a drop-down box with choices, select **New Window (_blank)**



The Target Frame will be filled in with **_blank**, Click **OK**

Click Save at the bottom of the page you've updated that includes the hyperlinked text/image. Now when someone clicks on your link, a new window will be opened and their session at The Glass Association site will remain.